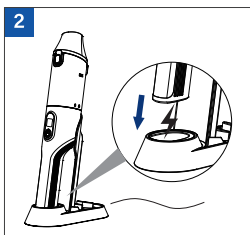
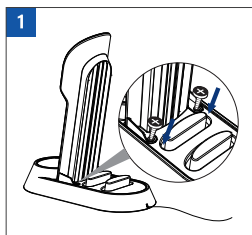


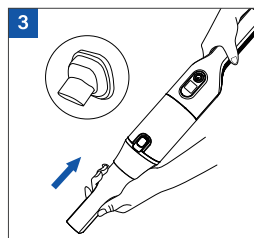
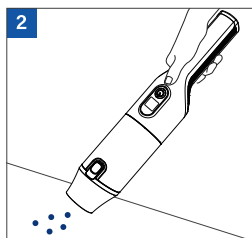
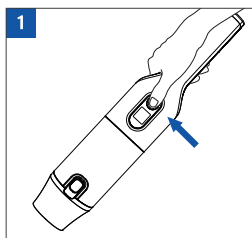
QUICK START GUIDE

CHARGING



- ① As the picture shows, use screws to fix the charging stand.
- ② As the picture shows, Insert the nozzle upward into the charging base.
- ③ Plug in the charger. The charging indicator will flash continuously (slowly).
- ④ When charging, the charger may become hot, which is completely normal and safe.

THE USE OF HANDHELD VACUUM

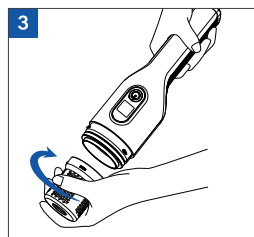
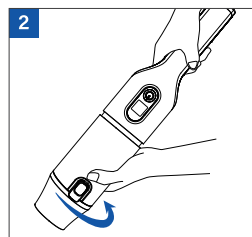
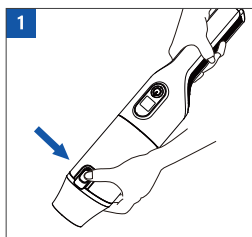


- ① Press the power button, press once for low gear, press twice for high gear, press again to turn off.
- ② Point the nozzle to the surface which is ready to wash.
- ③ The machine can clean the workshop, vehicles, couch, and carpets with additional accessories. What should be done is to push the brush in to the machine.

Note: The attachments must be installed while the device turns off.

CLEANING

Clean The Dust Cup



- ① Point your handheld vacuum cleaner to the top of the trash can, press the dust cup release button, then the dust cup will release.
- ② Swirl it according to the signs, remove the dust cup for thoroughgoing clean.
- ③ Rotate the filter to remove the entire filter part.
- ④ Tap or shake the dust cup filter to remove dust and debris.
- ⑤ Wipe the dust cup gently with a dry cloth to remove dust.

Important: Wipe and clean the dust cup and the body of the device before assembling to avoid abrasion due to dust particles.

QUICK START GUIDE

CLEANING

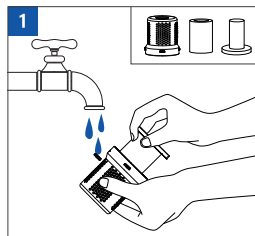
Clean The Filter

Warning

When the filter is clogged, the machine operates in Power Mode, which may cause the machine to shut down and enter a protective state.

Please clean the dust cup and filter promptly after each use.

The filter part can be cleaned with warm water. After drying the filter, proceed installation of putting it back to handheld vacuum cleaner.



Important:

- ① Only get the maximum dust collection by using an clean filter and empty dust cup. The cleaner the filter, the better the performance of the product.
- ② If dust starts to fall out of the product after it is turned off, this indicates that the dust cup is full and needs to be cleaned.
- ③ Clean the filters regularly with warm water to make sure they are completely dry before using them again.

TROUBLESHOOTING

Phenomenon	Possible cause	Solution
The machine does not work.	The battery runs out.	Charge the battery.
The machine does not suck or gently sucks stuff.	The dust cup is full.	Empty the dust cup.
	The dust cup is not correctly assembled.	Correctly place the container and solidly assemble it.
	The filter needs to be cleaned.	Follow the instructions about how to clean the filter on "CLEAN".
	The battery needs to be charged.	Charge the battery. Follow the instructions about how to charge the battery on "CHARGING".
	The filter is wet.	Dry thoroughly before use.
The machine overflows with visible dust.	The dust cup is full of stuff.	Empty the dust cup.
	The filter is missing or not correctly assembled.	Check whether the filter is correctly assembled.
	The dust cup fabric filter has a hole or a puncture and needs to be replaced.	Replace the filter.
The machine can not be charged.	The adapter is not correctly connected with the socket.	Check whether the charger and socket is solidly connected.
	The charger is wrong.	Use and only use the charger which is complimentary in the package.

Customer Support

Your satisfaction is always our first priority. We are committed to delivering the best products and services in the way our customers want. Whenever you have any problem, please contact our Consumer Support.

 Email: Robotvac.after@outlook.com